



# IMMACULATE, MODERN, ALL-NEW OFFICE & LAB SPACES

**NOW LEASING**



## CONTACT

### PETER CONTE

CA DRE # 01840209  
415.489.1844  
[peter.conte@transwestern.com](mailto:peter.conte@transwestern.com)

### ANDREW WHEELER

CA DRE # 02048909  
415.489.1831  
[andrew.wheeler@transwestern.com](mailto:andrew.wheeler@transwestern.com)



[www.sanjosebiocube.com](http://www.sanjosebiocube.com)





2680 Zanker Rd.  
San Jose, CA



Wet Lab suites range from 1,497 to 4,521  
SF individual lab



Includes central DI water & vacuum, fume  
hoods, emergency showers and eye  
washing stations, HazMat storage cabinets,  
and 1,000 KW emergency power



Includes on-site support  
& best practices

## BioCube Amenities

- Quick access to Highways 101 and 880
- Easy access to Light Rail, Caltrain and Ace Train Stations
- Minutes away from major amenities including restaurants, retail, and hotels

**NOW LEASING**

[Inquire Here](#)







## BioSquare Amenities

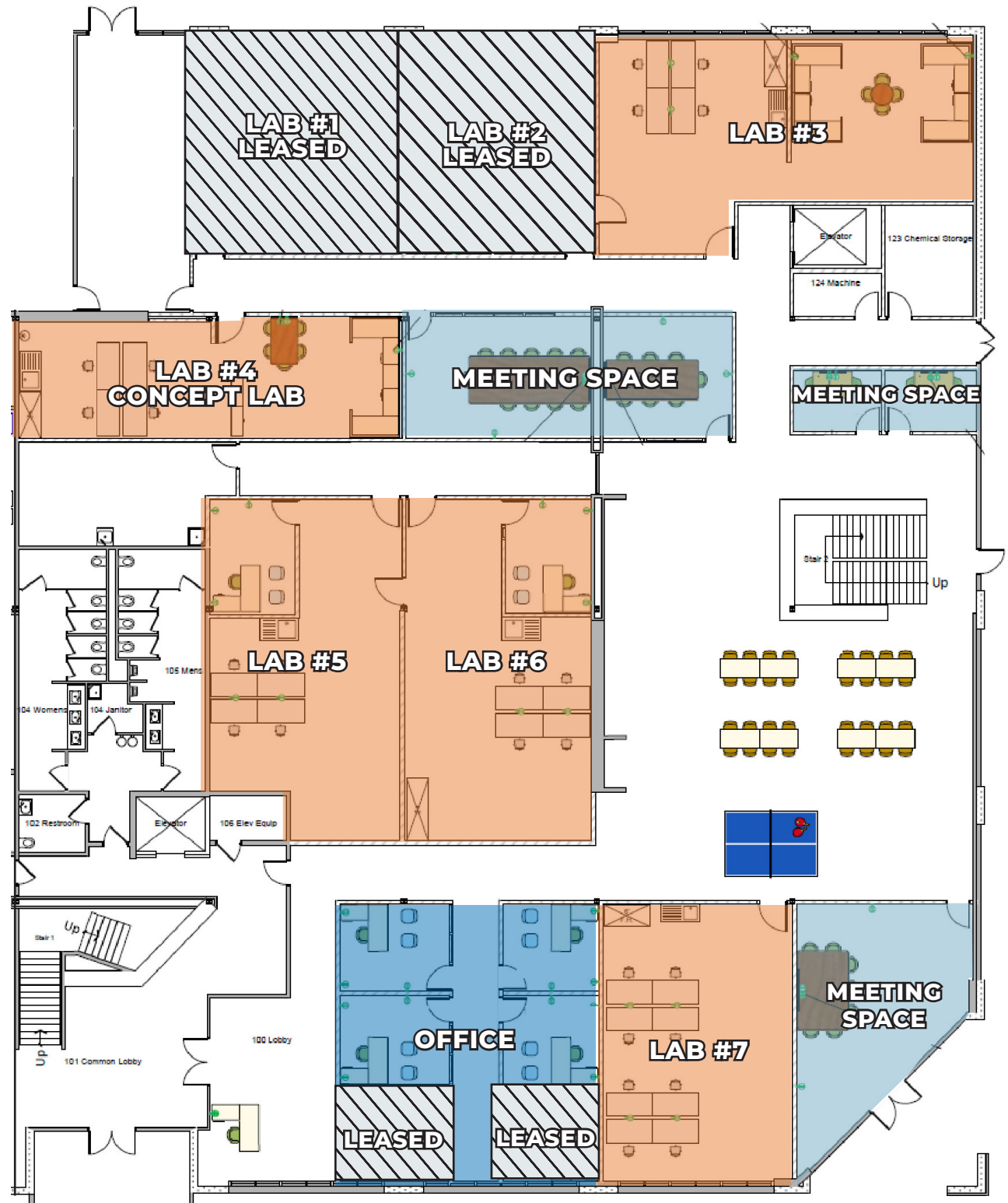
- New cafe
- New on-site gym
- New indoor/outdoor community space
- EV Parking



2680 Zanker Rd.  
San Jose, CA



# FIRST FLOOR PLAN



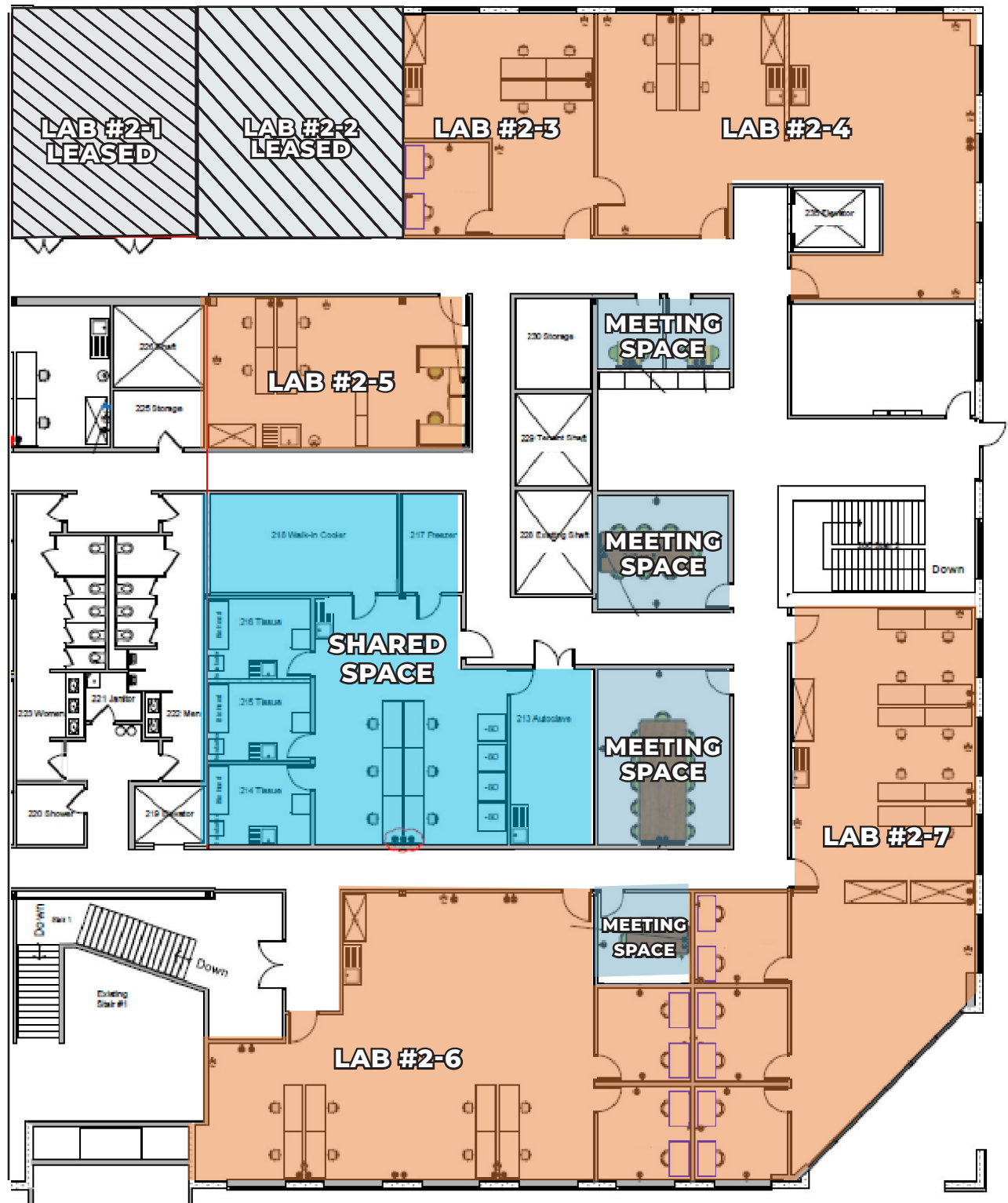


2680 Zanker Rd.  
San Jose, CA



ACCESS VIRTUAL TOUR HERE

# SECOND FLOOR PLAN





2680 Zanker Rd.  
San Jose, CA



# LAB SPACE #3





# LAB SPACE #4

This space can be shared between 2 different companies.





2680 Zanker Rd.  
San Jose, CA



# LAB SPACE #5

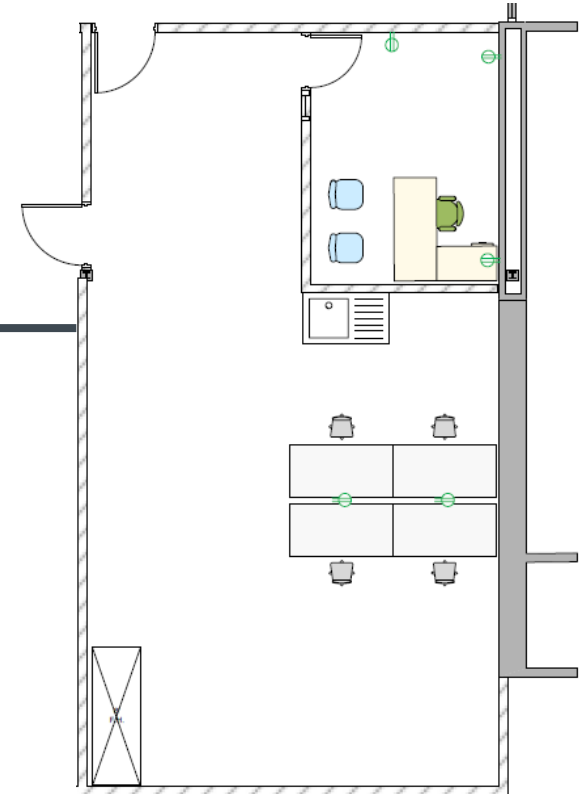




2680 Zanker Rd.  
San Jose, CA



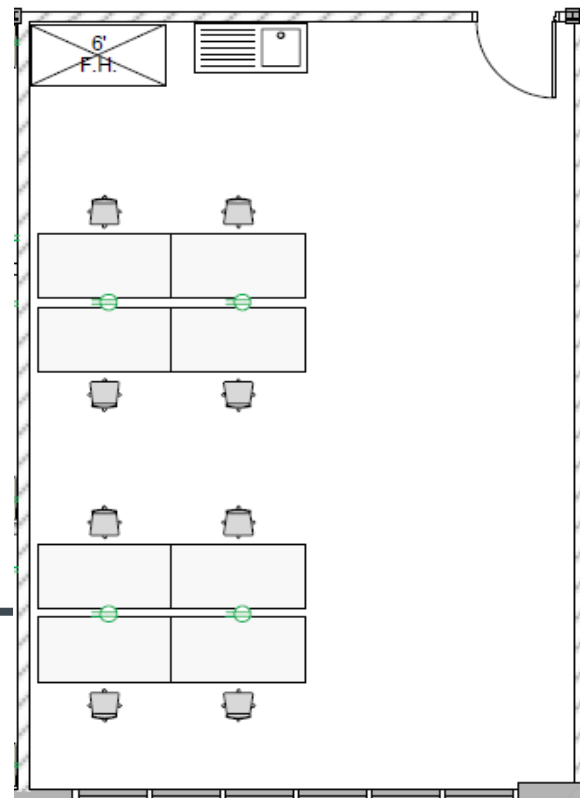
# LAB SPACE #6



2680 Zanker Rd.  
San Jose, CA



# LAB SPACE #7





2680 Zanker Rd.  
San Jose, CA



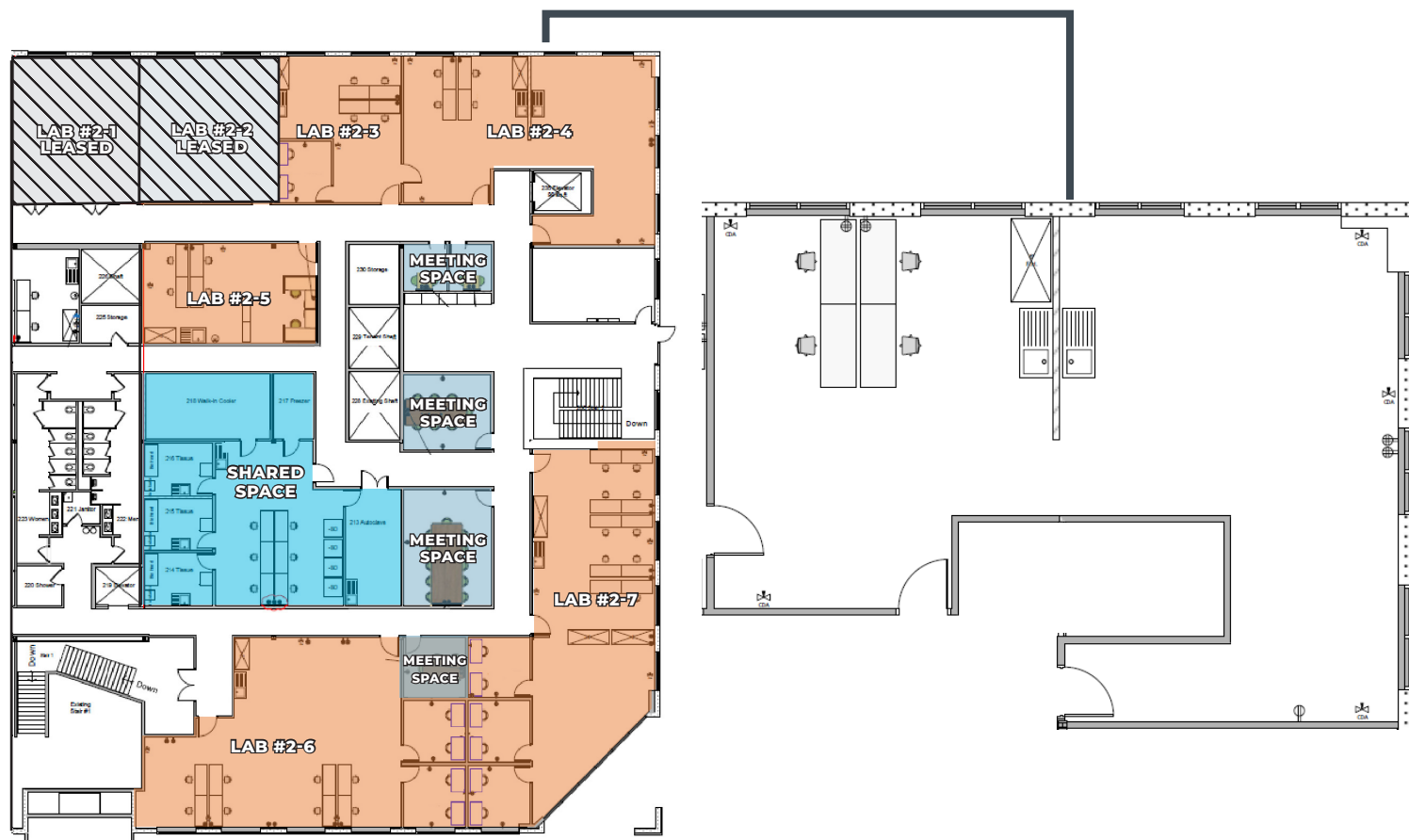
# LAB SPACE #2-3



2680 Zanker Rd.  
San Jose, CA



# LAB SPACE #2-4





2680 Zanker Rd.  
San Jose, CA



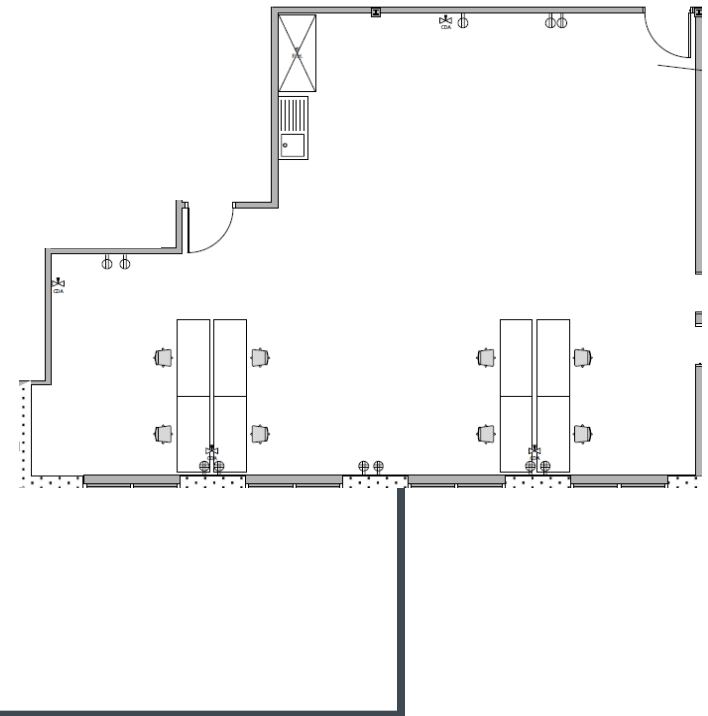
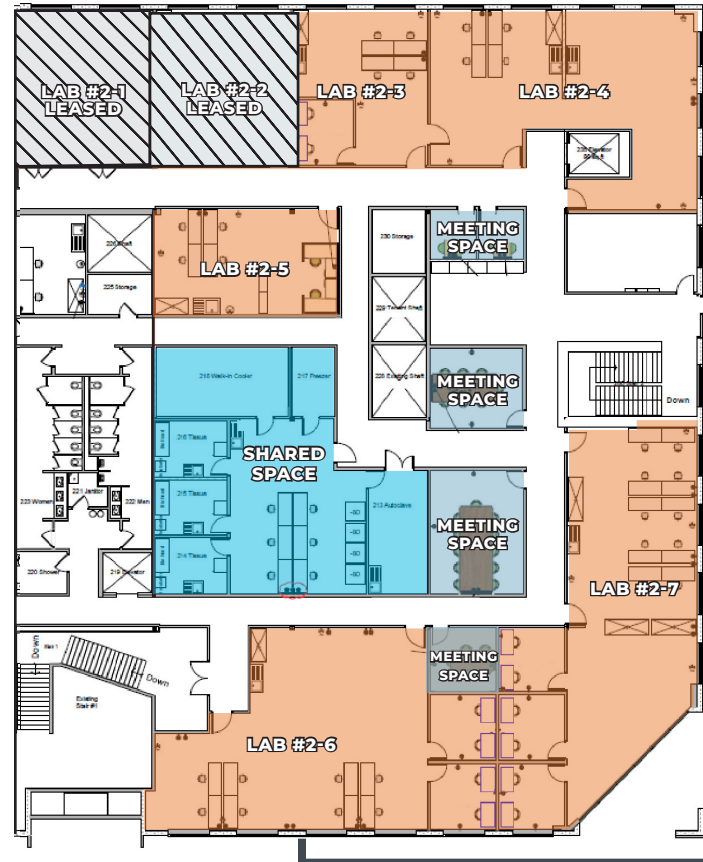
# LAB SPACE #2-5



2680 Zanker Rd.  
San Jose, CA



# LAB SPACE #2-6

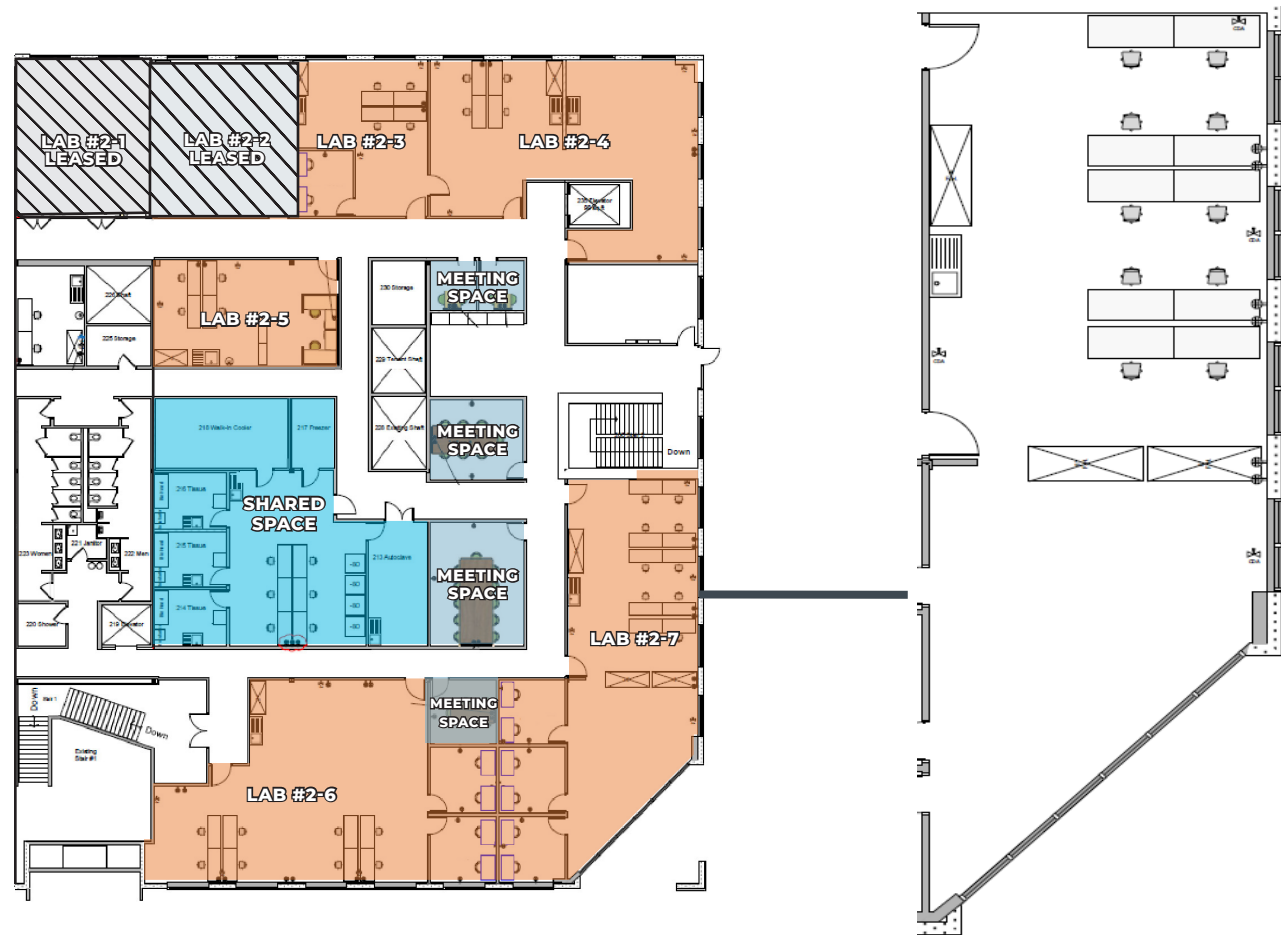




2680 Zanker Rd.  
San Jose, CA



# LAB SPACE #2-7



# WELCOME TO A NEW HAVEN FOR INSPIRATION

**NOW LEASING**



[www.sanjosebiocube.com](http://www.sanjosebiocube.com)



**TRANSWESTERN**

REAL ESTATE  
SERVICES

## CONTACTS

### PETER CONTE

CA DRE # 01840209

415.489.1844

[peter.conte@transwestern.com](mailto:peter.conte@transwestern.com)

### ANDREW WHEELER

CA DRE # 02048909

415.489.1831

[andrew.wheeler@transwestern.com](mailto:andrew.wheeler@transwestern.com)

Copyright © 2023 Transwestern. California Brokerage Lic #01263636.  
All data is derived from sources deemed to be reliable but is not guaranteed.

