



TRANSWESTERN

REAL ESTATE
SERVICES

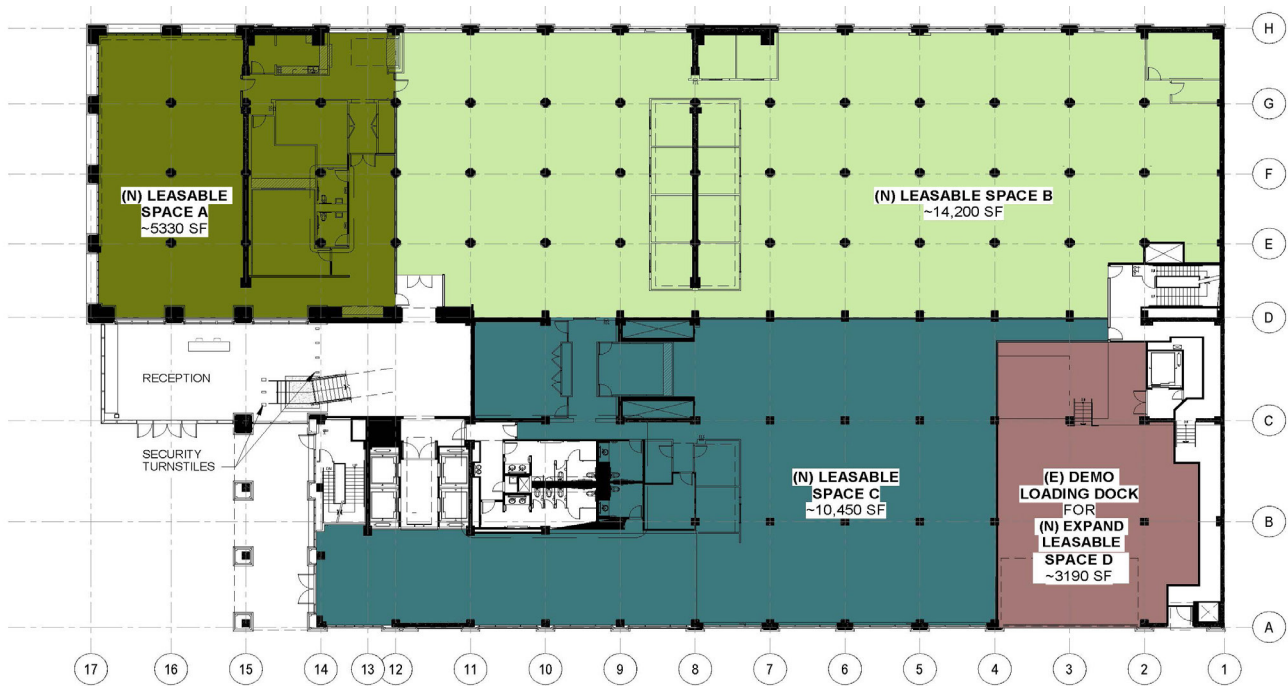
235 Second St. SAN FRANCISCO, CA

HIGH END MODERN CREATIVE BUILDING
FOR LEASE

BRIAN MCCARTHY
LIC# 01840990
415.489.1753
brian.mccarthy@transwestern.com

MADDIE MEYERSIECK
LIC# 01961652
415.489.1757
maddie.meyersieck@transwestern.com

MIKE MCCARTHY
LIC# 00929942
415.489.1756
mike.mccarthy@transwestern.com



GROUND FLOOR

- Creative spaces ready for finishing improvements
- High Identity space with private entrance directly into premises
- Demising walls can be moved to accommodate various sizes
- Potential to expand into current loading dock
- Ability to accommodate all size ranges from 5,330 - 33,170 SF

Space	Square Feet
A	5,330
B	14,200
C	10,450
D	3,190
Total	33,170

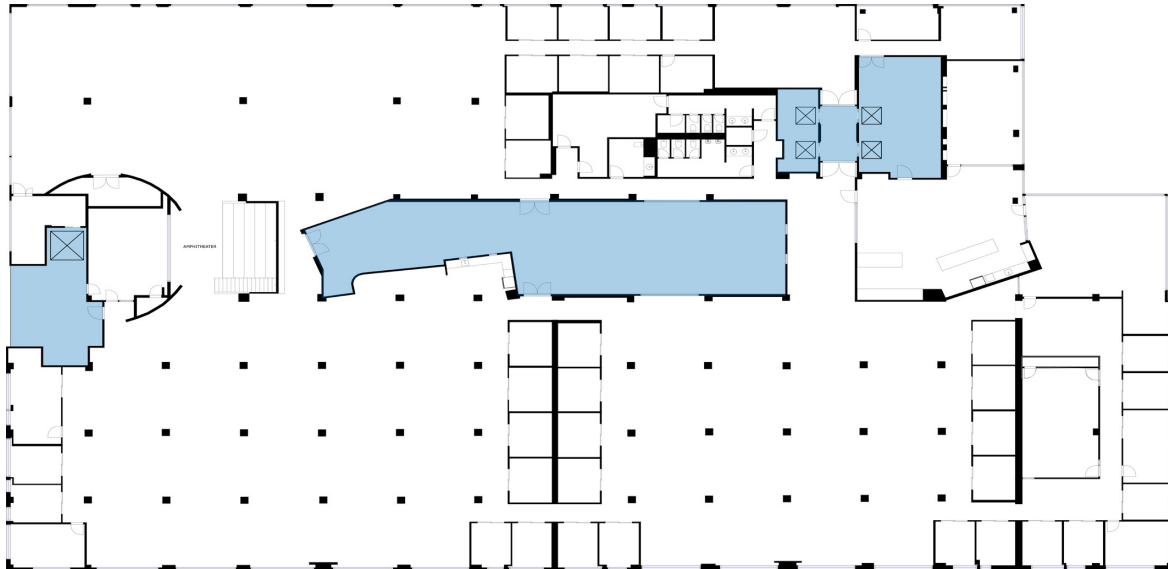


CONTACT:

BRIAN MCCARTHY
LIC# 01840990
415.489.1753
brian.mccarthy@transwestern.com

MADDIE MEYERSIECK
LIC# 01961652
415.489.1757
maddie.meyersieck@transwestern.com

MIKE MCCARTHY
LIC# 00929942
415.489.1756
mike.mccarthy@transwestern.com



SIZES AND DIMENSIONS ARE APPROXIMATE, ACTUAL MAY VARY.

[BLUE] = BUILDING MECHANICAL /COMMON AREA

5TH FLOOR

41,104 RSF

- 35 Offices / Small Conference Rooms
- 9 Large / Medium Conference Rooms
- 168 Workstations
- Kitchen
- Amphitheatre Style All-Hands Space
- Game Room
- Furniture Potentially Available



CONTACT:

BRIAN MCCARTHY
LIC# 01840990
415.489.1753
brian.mccarthy@transwestern.com

MADDIE MEYERSIECK
LIC# 01961652
415.489.1757
maddie.meyersieck@transwestern.com

MIKE MCCARTHY
LIC# 00929942
415.489.1756
mike.mccarthy@transwestern.com