

FOR LEASE

±200 – ±14,000
RSF AVAILABLE

COUNTLESS
AMENITIES

MOVE-IN
READY SUITES
AVAILABLE

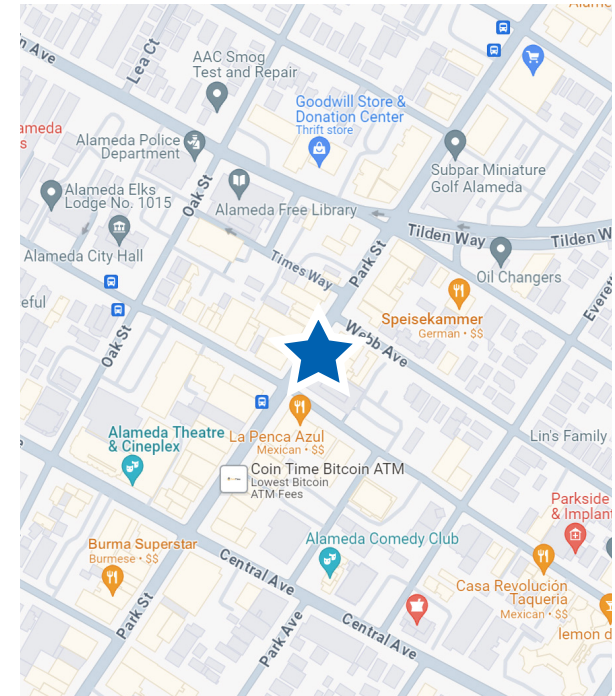


TRANSWESTERN

REAL ESTATE
SERVICES

PARK PLACE ALAMEDA

1500 Park Street (2411 Santa Clara Avenue), Alameda, CA 94501



Availabilities:

Entire Building: ±14,000 RSF available

- 1st Floor & Mezzanine: ±10,597 total RSF available
- 2nd Floor: ±200 – ±3,400+ RSF available

Building Amenities:

- Direct entry with street identity
- Entire building vacant with first-generation buildouts
- New exterior improvements with historical charm
- Located in the heart of Park Street, Alameda
- Parking on-site available

Leasing Information:

Jake Norton

CA LIC 01905366

925.360.9746

Jake.Norton@transwestern.com

The information provided herein was obtained from sources believed reliable; however, Transwestern makes no guarantees, warranties or representations as to the completeness or accuracy thereof. The presentation of this property is submitted subject to errors, omissions, change of price or conditions, prior sale or lease, or withdrawal without notice. Copyright © 2024 Transwestern.

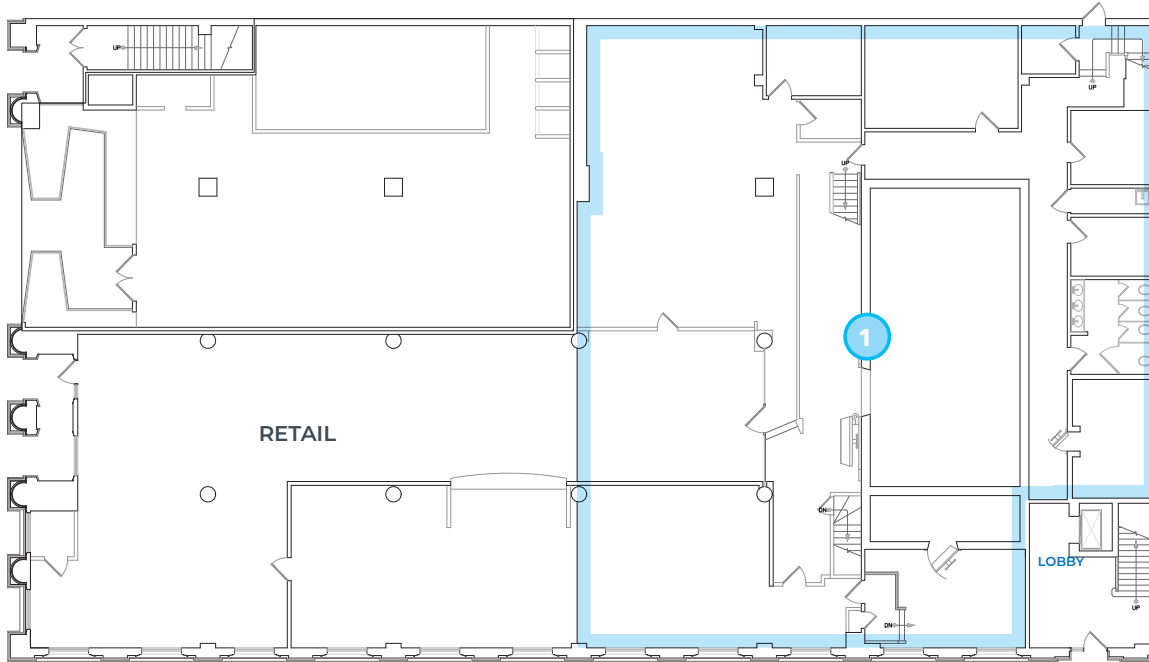
PARK PLACE ALAMEDA

1500 Park Street (2411 Santa Clara Avenue), Alameda, CA 94501



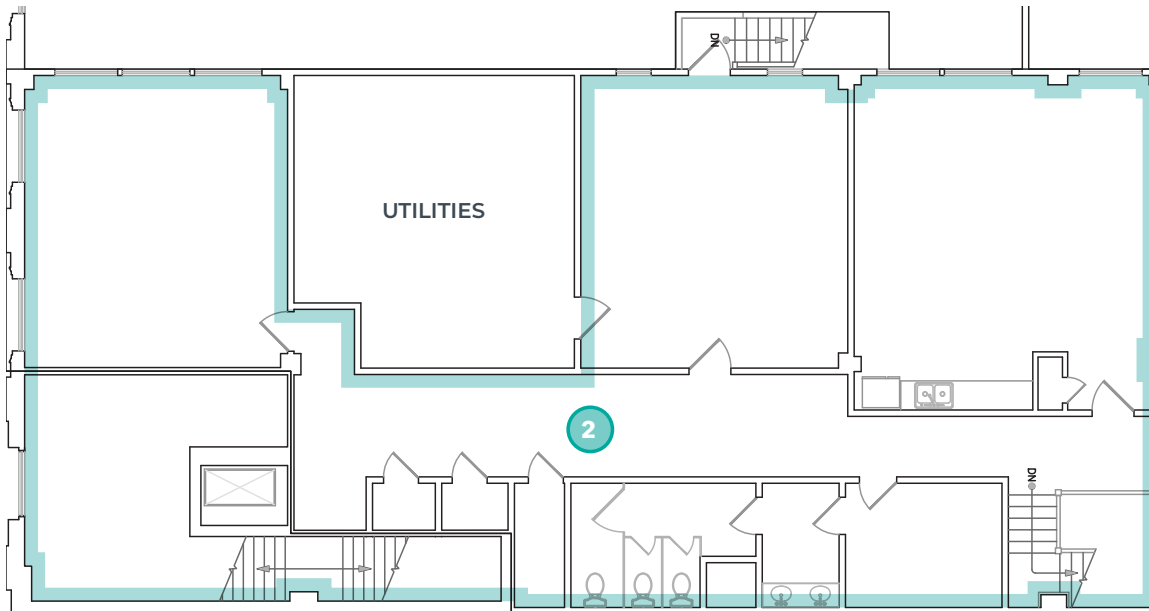
TRANSWESTERN

REAL ESTATE
SERVICES



1ST FLOOR & MEZZANINE: ±10,597 TOTAL RSF AVAILABLE

- 1 1st Floor: ±7,698 total RSF available
- 2 Mezzanine: ±2,899 total RSF available



Leasing Information:

Jake Norton
CA LIC 01905366
925.360.9746
Jake.Norton@transwestern.com

The information provided herein was obtained from sources believed reliable; however, Transwestern makes no guarantees, warranties or representations as to the completeness or accuracy thereof. The presentation of this property is submitted subject to errors, omissions, change of price or conditions, prior sale or lease, or withdrawal without notice. Copyright © 2024 Transwestern.

PARK PLACE ALAMEDA

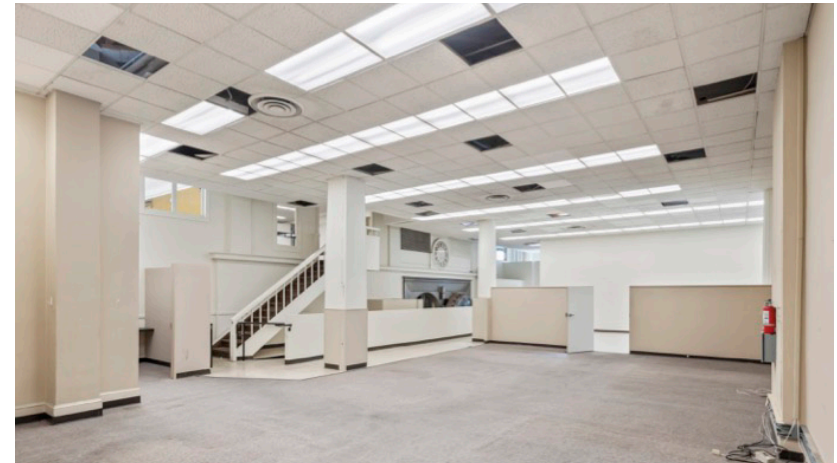
1500 Park Street (2411 Santa Clara Avenue), Alameda, CA 94501



TRANSWESTERN

REAL ESTATE
SERVICES

1ST FLOOR



Leasing Information:

Jake Norton

CA LIC 01905366

925.360.9746

Jake.Norton@transwestern.com

The information provided herein was obtained from sources believed reliable; however, Transwestern makes no guarantees, warranties or representations as to the completeness of accuracy thereof. The presentation of this property is submitted subject to errors, omissions, change of price or conditions, prior to sale or lease, or withdrawal without notice. **Copyright © 2024 Transwestern.**

PARK PLACE ALAMEDA

1500 Park Street (2411 Santa Clara Avenue), Alameda, CA 94501



TRANSWESTERN

REAL ESTATE
SERVICES

2ND FLOOR OFFICE SUITES: ±3,400 TOTAL RSF AVAILABLE

Suite	RSF	Price
8	204	\$1,250
10	356	\$2,500
12	355	Pending
13	267	\$1,500
14	247	\$1,450
16	–	\$3,600
19	193	\$1,150
20	193	Pending
21	222	Pending
27	176	\$1,050
28	176	\$1,050
29	176	Pending
30	176	Pending



Leasing Information:

Jake Norton

CA LIC 01905366

925.360.9746

Jake.Norton@transwestern.com

The information provided herein was obtained from sources believed reliable; however, Transwestern makes no guarantees, warranties or representations as to the completeness of accuracy thereof. The presentation of this property is submitted subject to errors, omissions, change of price or conditions, prior to sale or lease, or withdrawal without notice. Copyright © 2024 Transwestern.

PARK PLACE ALAMEDA

1500 Park Street (2411 Santa Clara Avenue), Alameda, CA 94501



TRANSWESTERN

REAL ESTATE
SERVICES

2ND FLOOR OFFICES



Leasing Information:

Jake Norton

CA LIC 01905366

925.360.9746

Jake.Norton@transwestern.com

The information provided herein was obtained from sources believed reliable; however, Transwestern makes no guarantees, warranties or representations as to the completeness of accuracy thereof. The presentation of this property is submitted subject to errors, omissions, change of price or conditions, prior to sale or lease, or withdrawal without notice. Copyright © 2024 Transwestern.

PARK PLACE ALAMEDA

1500 Park Street (2411 Santa Clara Avenue), Alameda, CA 94501

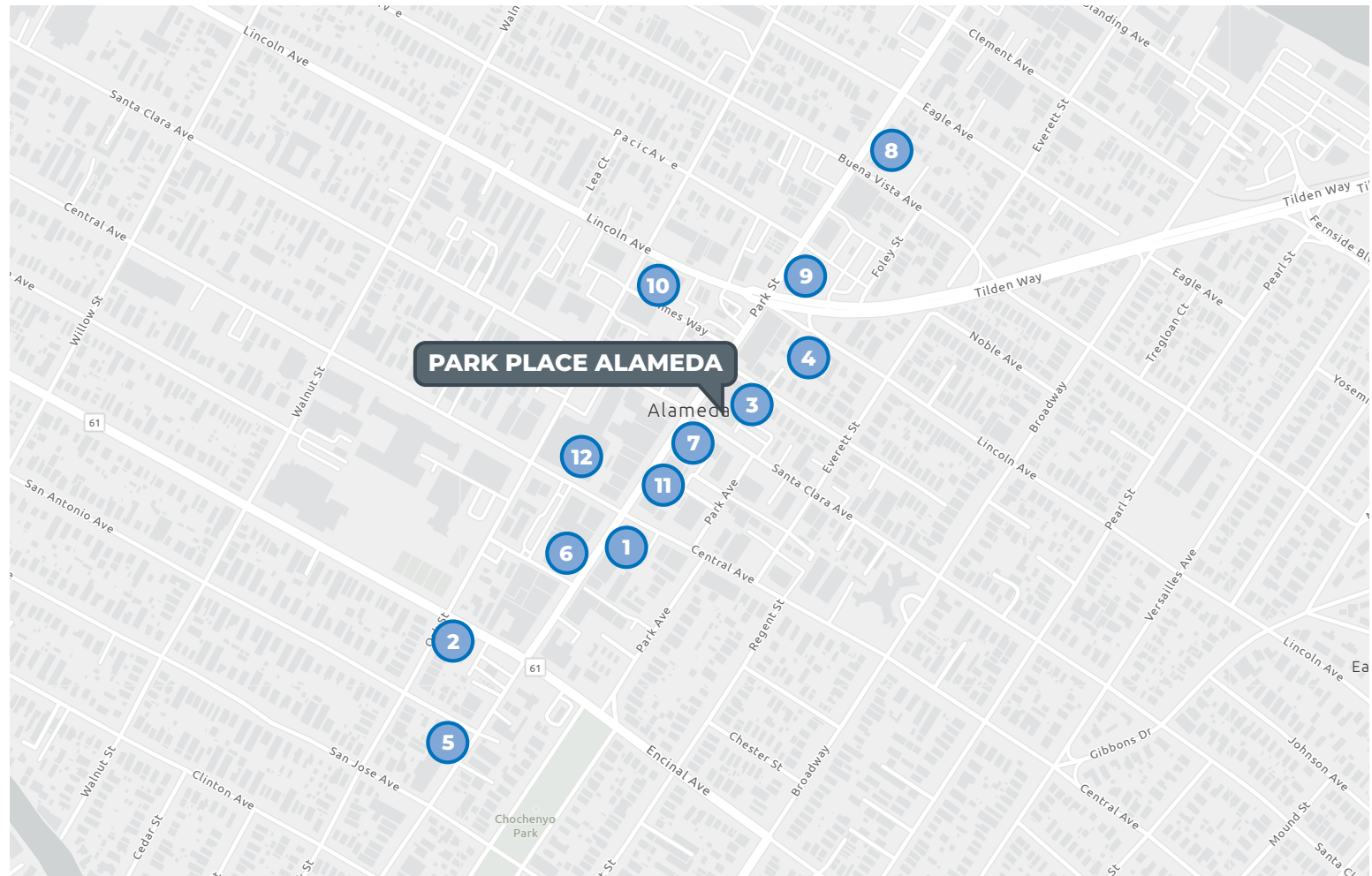


TRANSWESTERN

REAL ESTATE
SERVICES

Surrounding Amenities & Services

- 1 Starbucks
- 2 Sidestreet Pho
- 3 Sandwich Board
- 4 Speisekammer
- 5 Julie's Coffee & Tea Garden
- 6 Burma Superstar
- 7 La Penca Azul
- 8 Alameda Island Brewing
- 9 Subpar Miniature Golf Alameda
- 10 Alameda Free Library
- 11 High Scores Arcade
- 12 Alameda Theatre & Cineplex



Leasing Information:

Jake Norton

CA LIC 01905366

925.360.9746

Jake.Norton@transwestern.com

The information provided herein was obtained from sources believed reliable; however, Transwestern makes no guarantees, warranties or representations as to the completeness of accuracy thereof. The presentation of this property is submitted subject to errors, omissions, change of price or conditions, prior to sale or lease, or withdrawal without notice. **Copyright © 2024 Transwestern.**